

**DENVER AIR ROUTE TRAFFIC CONTROL CENTER/COLORADO SPRINGS TERMINAL  
RADAR CONTROL AND COLORADO SPRINGS AIRPORT TRAFFIC CONTROL TOWER**

LETTER OF AGREEMENT

Effective 10/20/19

**SUBJECT: TERMINAL AREA CONTROL**

---

1. **PURPOSE:** This letter of agreement establishes standard procedures for handling air traffic between Denver Air Route Traffic Control Center (Center) and Colorado Springs Terminal Radar Approach Control (TRACON) / Colorado Springs Airport Traffic Control Tower (Tower).
2. **CANCELLATION:** This agreement cancels the previous letter of agreement between Denver Air Route Traffic Control Center and Colorado Springs Airport Traffic Control Tower.
3. **DEFINITIONS:**
  - A. Aircraft groups are defined as follows:
    - 1) Group A – Jet Aircraft
    - 2) Group B – Non-jet Aircraft with a filed true airspeed of greater than 210kts
    - 3) Group C – Aircraft with a filed true airspeed of 210kts or less.
4. **PROCEDURES AND RESPONSIBILITIES:** Unless otherwise coordinated, the following must apply.
  - A. General. All altitudes are in MSL unless otherwise stated.
    - 1) Airspace delegated to the TRACON is at 16,000 and below and 12,000 and below as depicted in Attachment 1.
    - 2) Tower must inform the Center of the Active Runway
  - B. Arrivals.
    - 1) Arrival Gates. All Group A and B Colorado Springs Terminal Area arrivals must enter TRACON airspace via the arrival gates and associated routes defined below. Arrival gates include the airspace within 5NM either side of the associated course radials listed below. Arrivals must remain within the arrival gate. (The 5NM either side of the radials is for the control purposes after transfer of communication).

**For VATSIM Use Only**

**DENVER AIR ROUTE TRAFFIC CONTROL CENTER/COLORADO SPRINGS TERMINAL  
RADAR CONTROL AND COLORADO SPRINGS AIRPORT TRAFFIC CONTROL TOWER**

<u>Names</u>	<u>Gates (Required Routes)</u>
Hugo (HGO)	BRK070R clockwise to BRK091R ( <b>BRK*</b> , <b>CHEBA..BRK*</b> , <b>or OZZZY STAR</b> )
Pueblo (PUB)	BRK173R ( <b>DBRY STAR</b> )
Broadmoor (BDM)	BRK218R ( <b>BRK218R.BRK*</b> ) Only when landing 17
Academy (AFF)	BRK278R/V108 ( <b>..BRK*</b> ) Only for Group B or C arrivals filed 17,000' or lower. Omni-directional: may also be used for V108 departures

\*After BRK, arrivals will be cleared direct destination airport when not assigned a STAR.

- 2) All Group A RNAV-equipped and qualified aircraft landing COS filed over the HGO gate must be on the OZZZY STAR
- 3) Altitude Assignments. Group A arrivals on the OZZZY STAR must be assigned the STAR altitudes i.e., 'descend via', unless otherwise coordinated. Other Colorado Springs Terminal Area arrivals must enter the arrival gates at the following altitudes:

<u>Gates</u>	<u>Group A</u>	<u>Group B</u>	<u>Group C</u>
HGO	13000-16000 (See Note 1)	13000-16000 (See Note 1)	10000
PUB	13000 or 14000 (See Note 2)	13000	13000 or through PUB airspace
BDM	16000	16000	16000
AFF	N/A	14000	14000

Note1: Group A non-RNAV and Group B aircraft arriving via HGO must be level, or cleared to cross CHEBA, at an altitude 13000-16000. Dissimilar types may be stacked and like types must be sequenced regardless of altitude.

Note 2: Dissimilar types may be stacked and like types must be sequenced regardless of altitude.

Exception: Group B and C arrivals at 10000 or below may be cleared to enter the TRACON airspace direct destination airport.

- 4) When a Group A aircraft on a "Descend Via" clearance will conflict with Group B or C aircraft over a similar route, the Center must suspend use of "descend Via" procedures for the affected aircraft.

**For VATSIM Use Only**

**DENVER AIR ROUTE TRAFFIC CONTROL CENTER/COLORADO SPRINGS TERMINAL  
RADAR CONTROL AND COLORADO SPRINGS AIRPORT TRAFFIC CONTROL TOWER**

- 5) TRACON has control for turns and descent on Colorado Springs Terminal Arrivals within 10NM of the common boundary. Arrivals must remain within the arrival gate. Group A RNAV aircraft on the OZZZY STAR must remain on the lateral path and descent profile to cross the OZZZY waypoint at 14000.

C. Departures.

- 1) Departure Gates. Departure gates include the airspace between point D and point H not defined as an arrival gate and the AFF gate.

<u>Gate</u>	<u>Routes</u>
East	BRK115R or direct JEWLS
South	BRK140R or direct BRESH and PUB354R / V83 or direct PUB
Academy	BRK278R / V108 (Use only for Group B or C aircraft with a filed requested altitude of 17000 or lower.) Omni-directional: May also be used for arrivals.

- 2) TRACON must ensure 5NM separation or greater constantly increasing.
- 3) Aircraft departing the Colorado Springs Terminal Area must exit through the appropriate departure gate. TRACON must ensure the aircraft are established on the appropriate departure route or on a heading to join their route at or prior to BRK115045(JEWLS), BRK140045(BRESH), or PUB VORTAC, whichever applies. TRACON must separate aircraft with a filed altitude of 11000 or above from the arrival gates by 3NM or more.
- 4) Departure must be cleared to 16,000 or lower filed altitude.
- 5) Center has control for turns on departures with 20NM of the common Center/TRACON common boundaries. Departures must remain within the departure gate.

**DENVER AIR ROUTE TRAFFIC CONTROL CENTER/COLORADO SPRINGS TERMINAL  
RADAR CONTROL AND COLORADO SPRINGS AIRPORT TRAFFIC CONTROL TOWER**

D. Overflights.

- 1) Group A RNAV-equipped aircraft landing APA, BJC or BKF (non-fighters) must be on the DUNNN RNAV STAR.
- 2) The following route and altitude assignments must be applied if Center routes non-RNAV APA, BJC, BKF (non-fighters), or DEN arrivals through TRACON airspace.

**East:** All Group A/B aircraft enter TRACON airspace must go through the HGO gate routed **BRK..FQF** or **CHEBA..BRK..FQF..(destination)**. Aircraft must be level at 13000 thru 16000 Similar type aircraft landing the same airport must be sequenced, dissimilar aircraft may be stacked.

**South:** Group A aircraft inbound from the BRK115R through the BRK173R must be cleared BRK..FQF..(destination) and cross 15NM from BRK at 17000. Group B aircraft entering TRACON airspace from the south must be routed **BRK173..BRK** or **FSHER..BRK..FQF..(destination)** level at 13000 through 16000 and may be stacked.

- 3) All other overflights, unless otherwise coordinated, entering and exiting TRACON airspace must be on the route and altitude depicted on the flight progress strip.
- 4) TRACON must ensure overflights do not exit TRACON airspace through the PUB arrival gate.
- 5) Center has control for turns on overflights within 10NM of the common Center/TRACON boundary.
- 6) TRACON has control for turns and descents on overflights within 10NM of the common boundary.

**5. ATTACHMENTS**

- A. Airspace Chart (Attachment 1)

**6. APPROVED**



Chris James  
Air Traffic Manager  
Denver ARTCC

**DENVER AIR ROUTE TRAFFIC CONTROL CENTER/COLORADO SPRINGS TERMINAL  
RADAR CONTROL AND COLORADO SPRINGS AIRPORT TRAFFIC CONTROL TOWER**

Attachment 1

Airspace delegated to Colorado Springs TRACON at 16,000' MSL and below.

POINT

- A. 391006/1044206 to
- B. 391009/1041943 THENCE VIA THE IRONDALE 45 NM ARC TO
- C. 391148/1041509 to
- D. 385100/1040500 to
- E. 382957/1040244 to
- F. 382900/1041500 to
- G. 382615/1044900 to
- H. 382608/1045732 to
- I. 382638/1050016 to
- J. 385509/1045426 to
- M. 390647/1045200 THENCE VIA THE IRONDALE 45 NM ARC TO
- N. 390616/1044628 to point A.

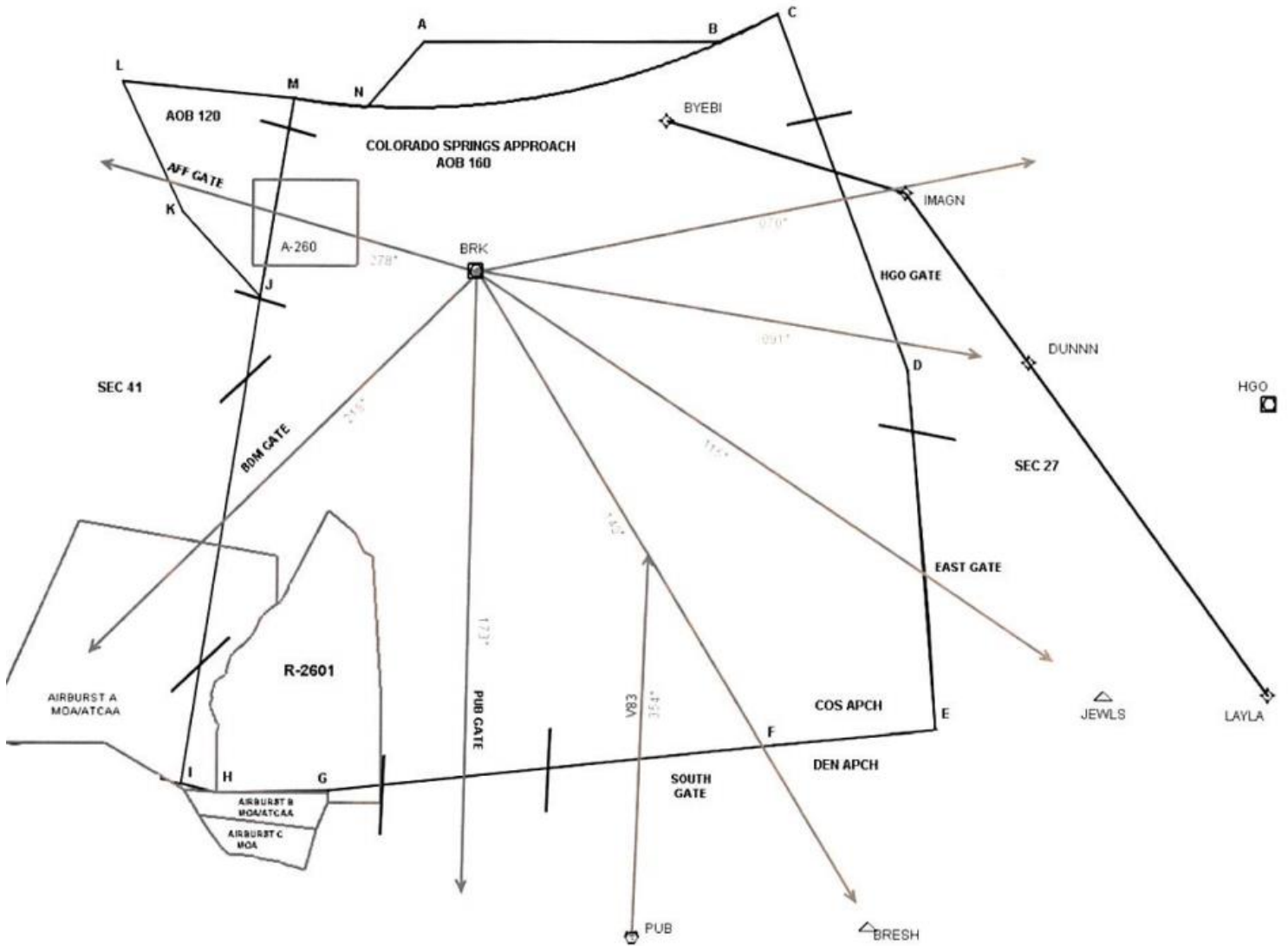
Airspace delegated to Colorado Springs TRACON at 12,000' MSL and below.

POINT

- J. 385509/1045426 to
- K. 390007/1050025 to
- L. 390744/1050506 to
- M. 390647/1045200 to point J.

**For VATSIM Use Only**

# DENVER AIR ROUTE TRAFFIC CONTROL CENTER/COLORADO SPRINGS TERMINAL RADAR CONTROL AND COLORADO SPRINGS AIRPORT TRAFFIC CONTROL TOWER



For VATSIM Use Only